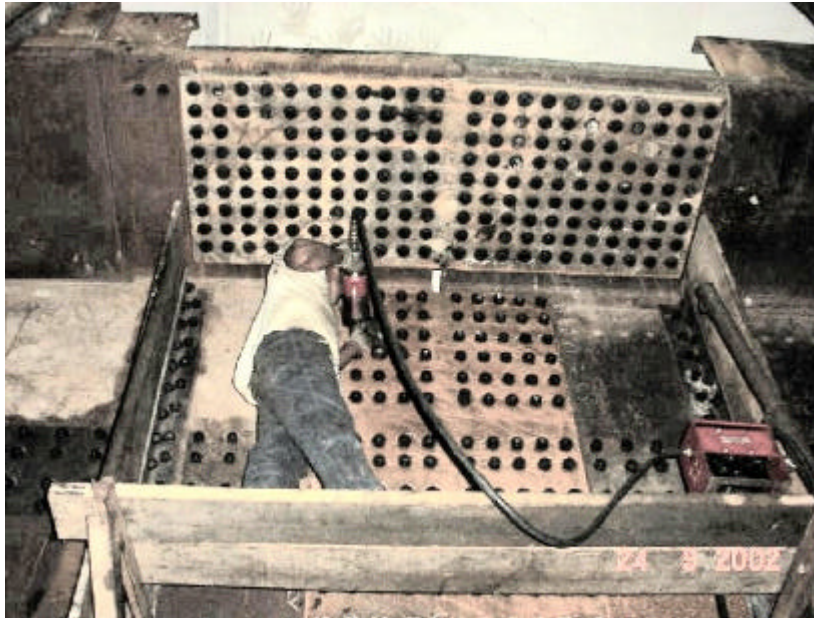


## BRIDGE ASSEMBLY USING NORBAR PNEUTORQUE PT5



In recent years the increased focus on safety and torque awareness has forced industrial engineers and contractors to take a fresh look at the way in which they work and the methods used.

In many cases this has meant that contractors are changing from the more traditional style impact wrenches to a more precise, repeatable and user-friendly type of stall tool.

In the case of this railway bridge that is currently under construction it was decided that four PT5 multipliers were the best option.

The tools are in operation 24 hours per day and a total of 600,000 bolts are being tightened.

Obviously under these extreme conditions a fixed maintenance schedule is being followed to ensure the efficiency of the tools, this includes the daily extraction of water from all pipes and chambers as well as a complete system oil change.

Main benefits to the contractor are that these 4 tools will complete the construction with minimal maintenance and maximum efficiency.

Main benefits to the operator are that the Pneutorque series of tools are totally non-impacting meaning that they are able to work for longer periods without the risk of impact fatigue or repetitive strain related injury.

