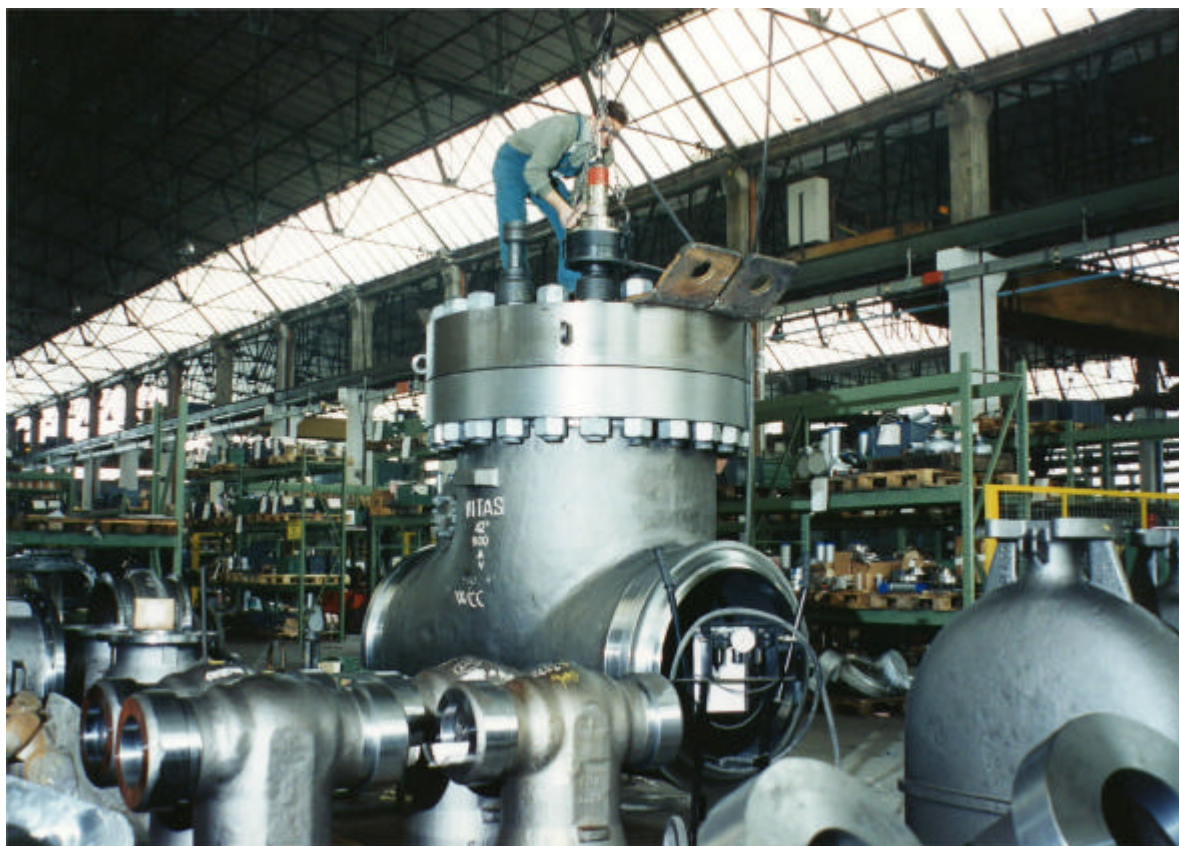


PT14 FOR 'CHECK VALVE' ASSEMBLY



Vitas Valves in Italy have a full compliment of Norbar Pneutorque multipliers for the final assembly of their 'Gate' and 'Check' Valves.

Here we can see one of the larger 42" 'Check Valves' being assembled using a PT14, the smooth non impacting action of this tool ensures that the flange is evenly tightened with excellent torque repeatability to ensure the perfect seal.